



# GMS Flash Alert

Immigration Edition

2021-180 | June 22, 2021



## Ireland – COVID-19: Visa Restrictions Lifted for South African, South American Travellers

Ireland's Immigration Service Delivery has announced the lifting of entry visa restrictions for nationals of South Africa, Brazil and other South American countries, in line with the government's "Resilience and Recovery Plan for Living with COVID-19."<sup>1</sup> The temporary restrictions have been in place since 28 January 2021. (For prior coverage, see [GMS Flash Alert 2021-43](#), 1 February 2021.)

Since 16 June 2021, individuals from Argentina, Bolivia, Brazil, Chile, Guyana, Paraguay, South Africa and Uruguay can travel to Ireland without applying for an entry or transit visa in advance of departure.

---

### WHY THIS MATTERS

Employers should note that employees that are nationals of these countries are no longer required to have an entry visa to Ireland. Companies and their globally-mobile employees who are nationals of these countries should be aware that they are still required to meet the conditions of entry for their intended stay in Ireland. All travellers arriving into Ireland must continue to comply with the relevant immigration requirements, as appropriate, and with the public health measures required by law, including completing a COVID-19 Passenger Locator Form, pre-arrival PCR test and quarantine in a designated facility or at home, as appropriate.

---

---

## KPMG NOTE

For advice on this changing situation, please contact your local qualified immigration counsel or the Corporate Immigration and Employment Law Team with KPMG in Ireland.

---

## FOOTNOTE:

1 For further information, see the Department of Justice's 15 June 2021 "Notice: COVID-19 Visa Arrangements" at: <http://www.inis.gov.ie/en/INIS/Pages/visas-updates> .

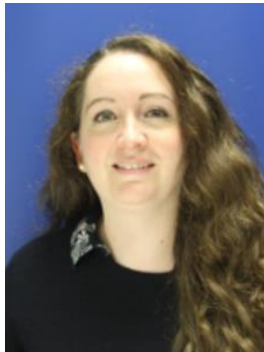
\* \* \* \*

## Contact us

For additional information or assistance, please contact your local GMS or People Services professional\* or one of the following professionals with the KPMG International member firm in Ireland:



**Aoife Newton**  
Tel. +353 1 700 4285  
[aoife.newton@kpmg.ie](mailto:aoife.newton@kpmg.ie)



**Elaine Norton**  
Tel. +353 1 700 4037  
[elaine.norton@kpmg.ie](mailto:elaine.norton@kpmg.ie)

*\* Please note that KPMG LLP (U.S.) does not provide any immigration services. However, KPMG Law LLP in Canada can assist clients with U.S. immigration matters.*

**The information contained in this newsletter was submitted by the KPMG International member firm in Ireland.**

© 2021 KPMG, an Irish partnership and a member firm of the KPMG global organisation of independent member firms affiliated with KPMG International Limited, a private English company limited by guarantee. All rights reserved.

[www.kpmg.com](http://www.kpmg.com)

[kpmg.com/socialmedia](http://kpmg.com/socialmedia)



© 2021 KPMG LLP, a Delaware limited liability partnership and a member firm of the KPMG global organization of independent member firms affiliated with KPMG International Limited, a private English company limited by guarantee. All rights reserved.

The KPMG name and logo are registered trademarks or trademarks of KPMG International. The KPMG name and logo are trademarks used under license by the independent member firms of the KPMG global organization.

KPMG LLP is the U.S. firm of the KPMG global organization of independent professional services firms providing Audit, Tax and Advisory services. The KPMG global organization operates in 147 countries and territories and has more than 219,000 people working in member firms around the world.

Each KPMG firm is a legally distinct and separate entity and describes itself as such. KPMG International Limited is a private English company limited by guarantee. KPMG International Limited and its related entities do not provide services to clients.

Flash Alert is a GMS publication of KPMG LLP's Washington National Tax practice. To view this publication or recent prior issues online, please click here. To learn more about our GMS practice, please visit us on the Internet: click here or go to <http://www.kpmg.com>.