



# GMS Flash Alert

## Immigration Edition

2021-024 | January 15, 2021

# Ireland - COVID-19: Pre-Departure Testing Requirements for Arriving Passengers

The Irish government has announced the requirement for a pre-departure negative PCR (COVID-19) test for passengers arriving in Ireland from all countries from 16 January 2021.<sup>1</sup>

## WHY THIS MATTERS

The introduction of these new pre-departure testing requirements may affect employers and their globally-mobile employees conducting business or work in Ireland in terms of the potential need for changes to upcoming travel plans in the short-term and new procedural requirements for all travel to Ireland going forward. Individuals should also note the consequences of non-compliance.

## New Pre-Departure Testing Requirements for Passengers Arriving to Ireland from 16 January 2021

The Irish government has announced the requirement for a pre-departure negative PCR (COVID-19) test for passengers arriving in Ireland from all countries from 16 January 2021.

All individuals arriving at Irish airports and other points of entry into Ireland will be required to produce a negative COVID-19 test result taken up to 72 hours prior to arrival in Ireland. Passengers will be asked to present evidence of their negative COVID-19 test result before boarding their airplane or ferry and will be required to produce this evidence to Immigration Officers upon arrival in Ireland.

## Some Exemptions Allowed

Passengers arriving from Northern Ireland and children aged six years and under are exempt from this requirement. Certain international transport workers are also exempt.

Passengers who arrive in Ireland solely for the purpose of travelling onwards to another state and do not leave the airport are also not required to provide evidence of a test. Certain exemptions also apply where an Irish citizen has a genuine humanitarian emergency requiring urgent travel.

## Penalties for Non-compliance

Passengers without evidence of a negative COVID-19 test may be subject to prosecution, punishable by a fine not exceeding €2,500, or imprisonment for a term not exceeding six months or both.

---

## KPMG NOTE

Organisations and their employees with planned travel to Ireland will need to consider these new requirements and may need to build in additional time into their immigration/travel processes to be able to meet the requirement of producing evidence of a negative COVID-19 test prior to any relocation or business travel to Ireland. (For recent travel restrictions applying to travellers from Great Britain and South Africa, see GMS [Flash Alert 2021-011](#), 8 January 2021.)

For advice on this changing situation, please contact your travel agent and local qualified immigration counsel or the Corporate Immigration and Employment Law Team with KPMG in Ireland.

---

## FOOTNOTE:

1 See "Travelling to Ireland during the COVID-19 pandemic," from the Department of the Taoiseach at: <https://www.gov.ie/en/publication/b4020-travelling-to-ireland-during-the-covid-19-pandemic/#new-pre-departure-testing-requirements-from-16-january-2021-for-all-passengers-travelling-to-ireland> .

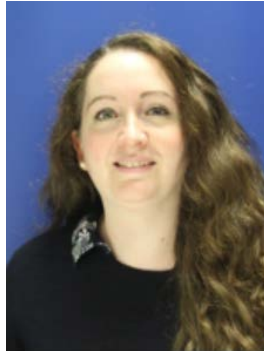
\* \* \* \*

## Contact us

For additional information or assistance, please contact your local GMS or People Services professional\* or one of the following professionals with the KPMG International member firm in Ireland:



**Aoife Newton**  
Tel. +353 1 700 4285  
[aoife.newton@kpmg.ie](mailto:aoife.newton@kpmg.ie)



**Elaine Norton**  
Tel. +353 1 700 4037  
[elaine.norton@kpmg.ie](mailto:elaine.norton@kpmg.ie)



**Nicola Booth**  
Tel. +353 1 700 4880  
[nicola.booth@kpmg.ie](mailto:nicola.booth@kpmg.ie)

*\* Please note that KPMG LLP (U.S.) does not provide any immigration services. However, KPMG Law LLP in Canada can assist clients with U.S. immigration matters.*

**The information contained in this newsletter was submitted by the KPMG International member firm in Ireland.**

© 2021 KPMG LLP, an Irish partnership and a member firm of the KPMG network of independent member firms affiliated with KPMG International Cooperative ("KPMG International"), a Swiss entity. All rights reserved.

[www.kpmg.com](http://www.kpmg.com)

[kpmg.com/socialmedia](http://kpmg.com/socialmedia)



© 2021 KPMG LLP, a Delaware limited liability partnership and the U.S. member firm of the KPMG network of independent member firms affiliated with KPMG International Cooperative ("KPMG International"), a Swiss entity. All rights reserved. Printed in the U.S.A. NDPPS 530159

The KPMG name and logo are registered trademarks or trademarks of KPMG International.

The KPMG logo and name are trademarks of KPMG International. KPMG International is a Swiss cooperative that serves as a coordinating entity for a network of independent member firms. KPMG International provides no audit or other client services. Such services are provided solely by member firms in their respective geographic areas. KPMG International and its member firms are legally distinct and separate entities. They are not and nothing contained herein shall be construed to place these entities in the relationship of parents, subsidiaries, agents, partners, or joint ventures. No member firm has any authority (actual, apparent, implied or otherwise) to obligate or bind KPMG International or any member firm in any manner whatsoever. The information contained in herein is of a general nature and is not intended to address the circumstances of any particular individual or entity. Although we endeavor to provide accurate and timely information, there can be no guarantee that such information is accurate as of the date it is received or that it will continue to be accurate in the future. No one should act on such information without appropriate professional advice after a thorough examination of the particular situation.

*Flash Alert* is a GMS publication of KPMG LLP's Washington National Tax practice. To view this publication or recent prior issues online, please click [here](#). To learn more about our GMS practice, please visit us on the Internet: click [here](#) or go to <http://www.kpmg.com>.