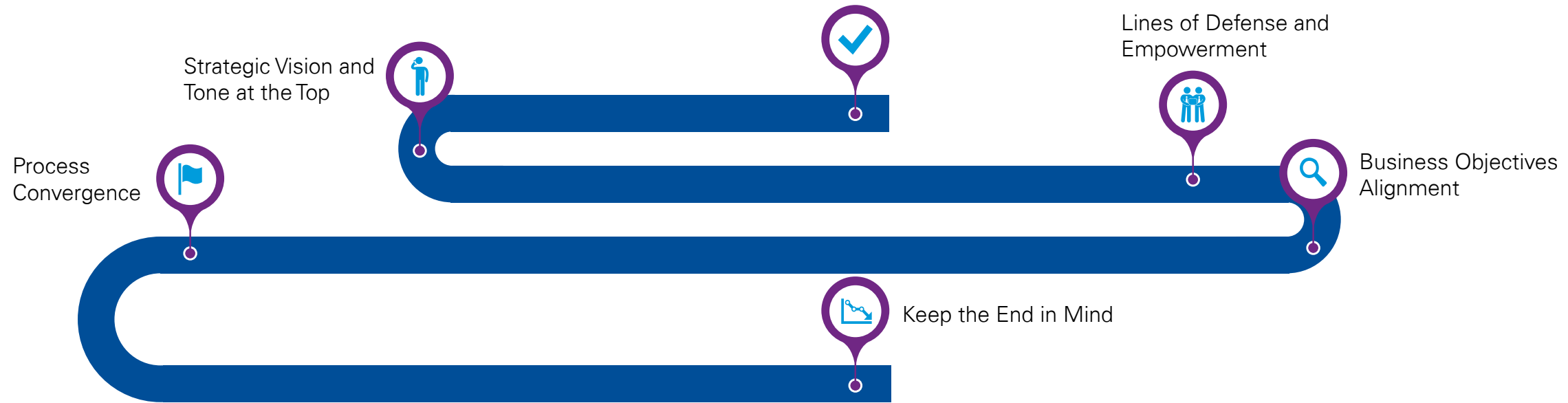




# Bringing performance to new heights in your GRC transformation

**GRC is a journey.** Here are some tips for success along the way.

kpmg.com



## People and Change Management\*

- Establish clear line of sight to all stakeholders
- Create a value proposition to promote buy-in and consistent messaging
- Identify business change champions
- Plan ahead for training and adoption

\*People and Change are embedded in each of the program components

## Technology Enablement

- Map requirements to converged, future state
- Identify gaps and establish a protocol to identify and prioritize changes and enhancements to the baseline platform
- Establish definitions and guiding principles around "configuration" and "customization"
- Create a plan to address data migration activities and application change management
- Establish go-live criteria
- Plan for "infant care" and postproduction support

## Program Management

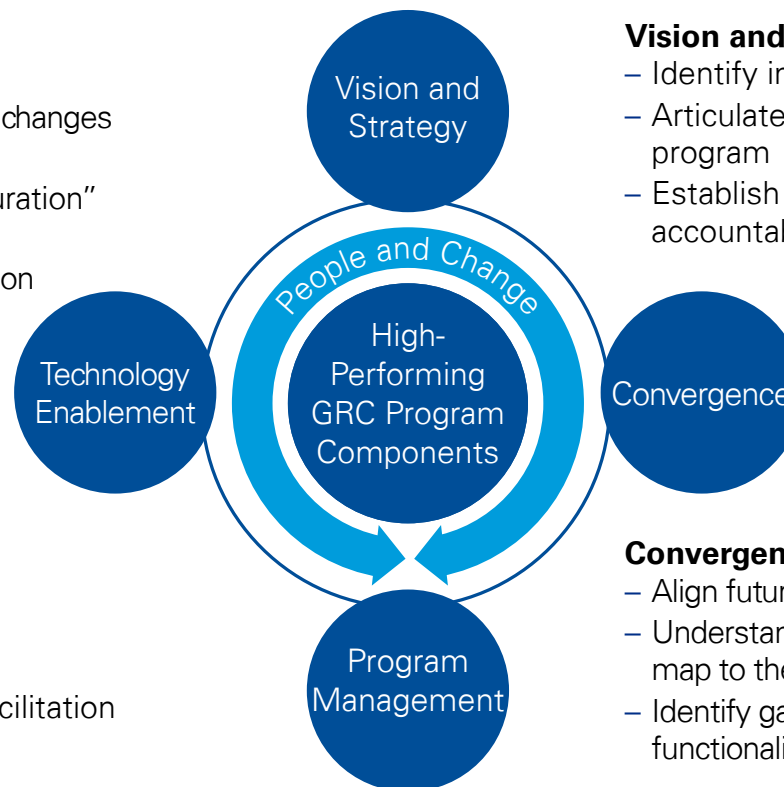
- Establish resource model, budgeting, and roles and responsibilities at GRC program and project level
- Manage expectations
- Clear objectives need to be set up front to improve the facilitation and focus of meetings

## Vision and Strategy

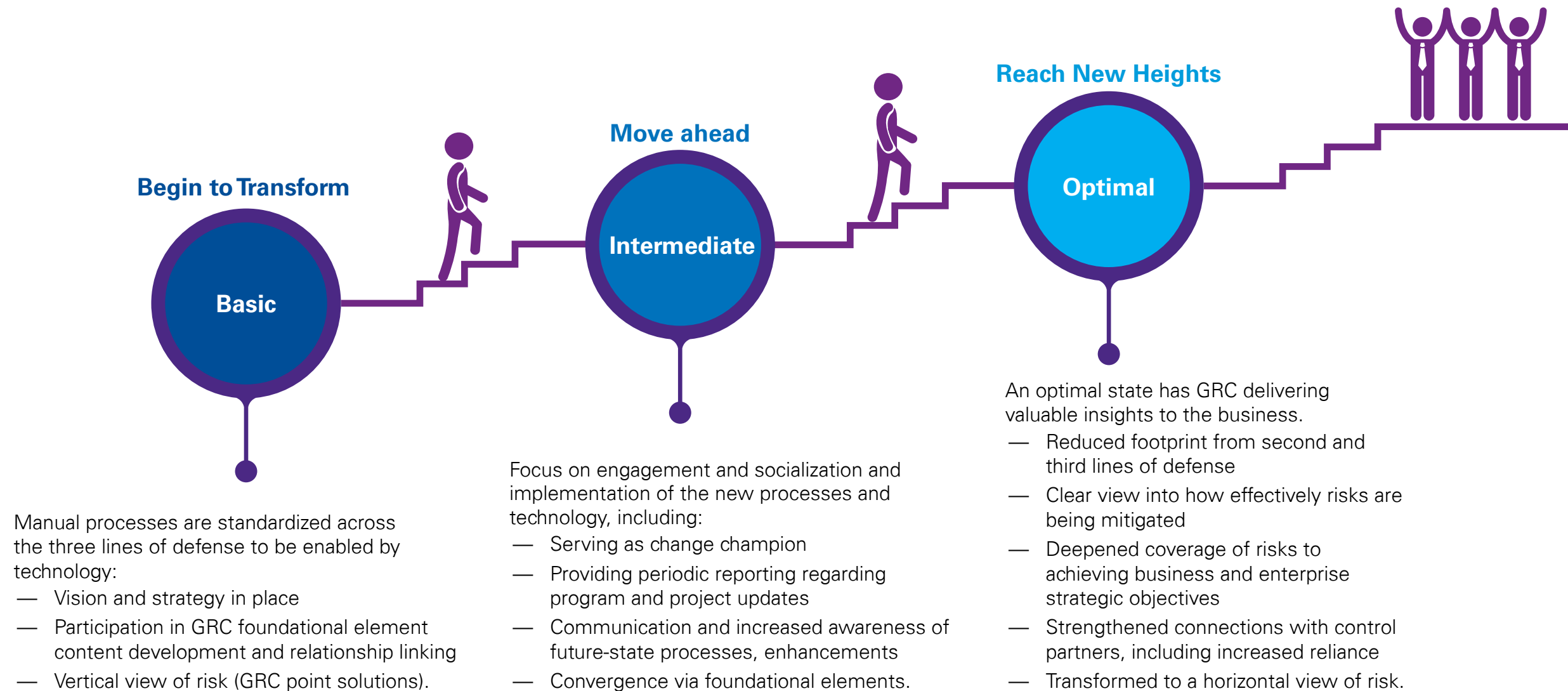
- Identify initial and future stakeholders at the onset
- Articulate the overall goal and objectives of the GRC program
- Establish a governance structure with clear ownership and accountability

## Convergence

- Align future state to vision and strategy
- Understand current and future state processes and how it will map to the future state
- Identify gaps early on as well as obtain alignment of shared functionality and integration points (people, process, and data)



## Bringing performance to new heights in your GRC transformation from basic to optimal performance



## KPMG contacts

**Lisa Rawls**  
Principal, Enterprise GRC Advisory Services  
T: 804-306-2182  
E: lisarawls@kpmg.com

**Salman Ali**  
Managing Director, Enterprise GRC Advisory Services  
T: 443-743-0051  
E: salmanali@kpmg.com

**Melinda Lesko**  
Manager, Enterprise GRC Advisory Services  
T: 703-286-8669  
E: mlesko@kpmg.com

**Katharine Saunders**  
Manager, Enterprise GRC Advisory Services  
T: 703-286-8730  
E: kmsaunders@kpmg.com

Not permissible for KPMG audit clients and their affiliates.

[kpmg.com/socialmedia](https://kpmg.com/socialmedia)



The information contained herein is of a general nature and is not intended to address the circumstances of any particular individual or entity. Although we endeavor to provide accurate and timely information, there can be no guarantee that such information is accurate as of the date it is received or that it will continue to be accurate in the future. No one should act upon such information without appropriate professional advice after a thorough examination of the particular situation.

© 2017 KPMG LLP, a Delaware limited liability partnership and the U.S. member firm of the KPMG network of independent member firms affiliated with KPMG International Cooperative ("KPMG International"), a Swiss entity. All rights reserved. Printed in the U.S.A. The KPMG name and logo are registered trademarks or trademarks of KPMG International. NDPPS 676845