

# M&A Trends in Thailand

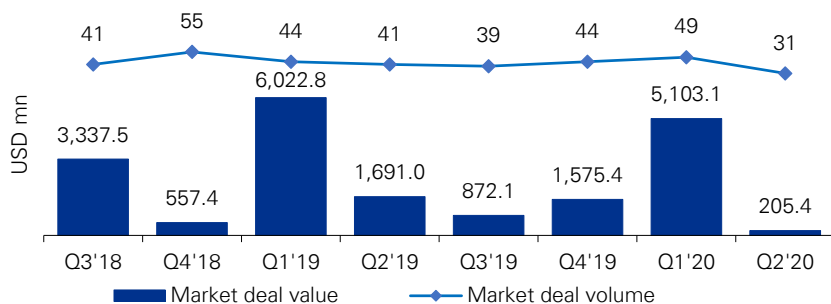
Q2 2020

KPMG in Thailand | Deal Advisory

As expected, there has been a global trend of declining M&A activities due to uncertainties caused by the COVID-19 pandemic; Thailand's deal landscape in Q2 2020 has naturally followed suit. Based on discussions with investors, deal flows are likely to increase towards the end of the year. With interest rates at historic lows, companies with solid balance sheets may look to explore distressed opportunities in the next few quarters as more opportunities present themselves. Given that declining valuations are creating opportunities to pursue deals that create long-term value, we expect M&A activities to cautiously move forward.

The majority of announced transactions in terms of deal value this quarter were in the Real estate, infra & construction, Energy & natural resources and Industrial manufacturing sectors, accounting for 83.1% of total deal value. The largest deal announced was The Megawatt Co., Ltd.'s acquisition of a 90.0% stake in Siam Solar Generation PCL for USD 36.1 million.

## M&A activity in Thailand

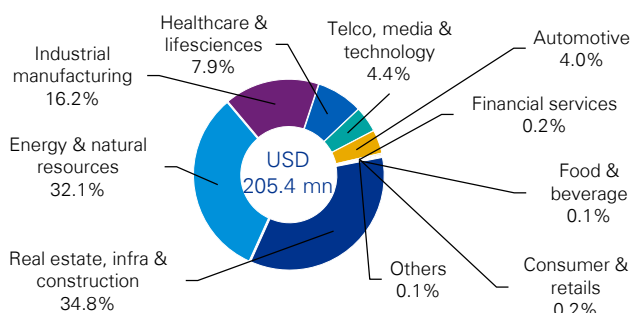


Q2 2020 M&A value and volume in Thailand

USD 205.4 million

31 Deals

## Q2 2020 M&A Transaction value by industry



Source: S&P Capital IQ

Top Sectors by transaction volume	No. of Transactions
Telco, media & technology	8
Energy & natural resources	7
Real estate, infra & construction	6
Food & beverage	3
Others	2
Automotive	1
Financial services	1
Healthcare & lifesciences	1
Industrial manufacturing	1
Consumer & retails	1
<b>Total</b>	<b>31</b>

Source: S&P Capital IQ

## Selected transactions

No.	Deal value (USD mn)	Percent sought (%)	Announced date	Target name	Target industry	Buyer name
1	36.1	90.0	14-May-20	Siam Solar Generation PCL	Energy & natural resources	The Megawatt Co., Ltd.
2	33.3	57.8	28-Apr-20	Furukawa Metal (Thailand) PCL	Industrial manufacturing	CTJ Holdings2 LLC
3	26.3	100.0	10-Jun-20	The Master Real Estate Co., Ltd.	Real estate, infra & construction	Max Metal Corporation PCL
4	18.9	99.8	28-May-20	Thai Marble Co., Ltd.	Energy & natural resources	Golden Lime PCL
5	17.8	40.0	2-Jun-20	Wealth Ventures Co., Ltd.	Real estate, infra & construction	News Network Corporation PCL
6	16.5	49.0	26-Jun-20	Ananda MF Asia Samyan Co., Ltd.	Real estate, infra & construction	Ananda Development PCL
7	16.2	100.0	30-Jun-20	Hospital Business of Ruamphaetsapphasit Co., Ltd.	Healthcare & lifesciences	Principal Capital PCL
8	8.3	51.0	25-May-20	Beli Service Co., Ltd.	Automotive	Nex Point PCL.
9	7.8	100.0	24-Apr-20	Green Net 1282 Co., Ltd.	Telco, media & technology	Nation Broadcasting Corporation PCL
10	6.6	100.0	28-May-20	Solar Power Plant Business	Energy & natural resources	Thailand Iron Works PCL

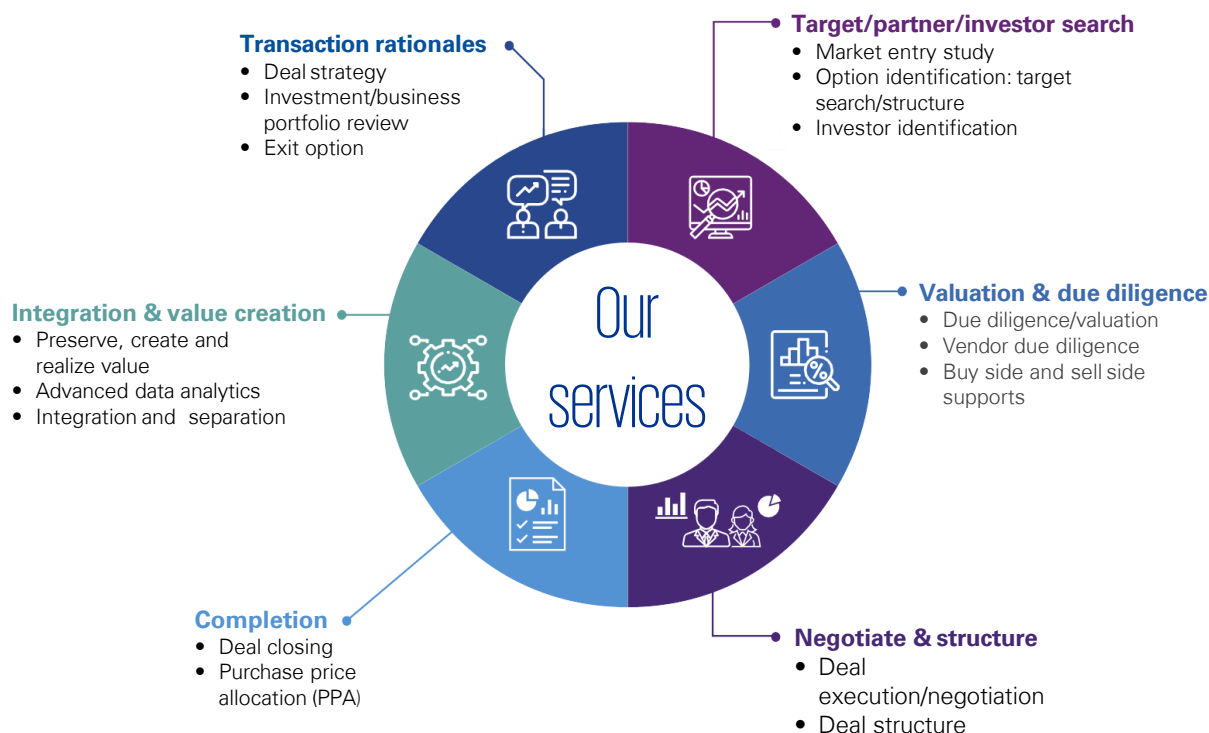
Source: S&P Capital IQ

# Data criterion

- Value data provided in the various charts represent the aggregate value of the deals for which a value was stated. Please note that values are disclosed for approximately 50% of all deals
- Deals are included where a stake of 30% or more has been acquired in the target. If the stake acquired is less than 30% then the deal is included if the value is equal to or exceeds the equivalent of USD 100 million
- All deals included have been announced but may not necessarily have closed
- Activities excluded from the data include restructurings where ultimate shareholders' interests are not affected

# KPMG Deal Advisory

Whether you need to buy, sell, partner, fund or fix a business, our Deal Advisory team works to help you find, secure, and drive value throughout the business life cycle.



# Contact us



**Ian Thornhill**  
Partner,  
Head of Deal Advisory

ithornhill@kpmg.co.th  
Tel: +66 2677 2297



**Surayos Chuephanich**  
Partner, Deal Advisory  
M&A Specialist

surayos@kpmg.co.th  
Tel: +66 2677 2752



**Yiran Yang**  
Director, Deal Advisory  
Head of China Practice

yyang@kpmg.co.th  
Tel: +66 2677 2216



**Matt Crane**  
Director, Deal Advisory  
Value Creation Specialist

mcrane1@kpmg.co.th  
Tel: +66 2677 2154



**Dominic Kobel**  
Manager, Deal Advisory  
M&A, International Practice

dkobel@kpmg.co.th  
Tel: +66 2677 2606



**Yuichiro Fujiwara**  
Manager, Deal Advisory  
Global Japanese Practice

yfujiwara3@kpmg.co.th  
Tel: +66 2677 2703

The information contained herein is of a general nature and is not intended to address the circumstances of any particular individual or entity. Although we endeavor to provide accurate and timely information, there can be no guarantee that such information is accurate as of the date it is received or that it will continue to be accurate in the future. No one should act upon such information without appropriate professional advice after a thorough examination of the particular situation. Transaction figures are based on completed transactions only. Deal value for certain transactions were not disclosed and accordingly not reflected in the total value.

© 2020 KPMG Phoomchai Business Advisory Ltd. a Thai limited liability company and a member firm of the KPMG network of independent member firms affiliated with KPMG International Cooperative ("KPMG International"), a Swiss entity. All rights reserved

The KPMG name and logo are registered trademarks or trademarks of KPMG International.