

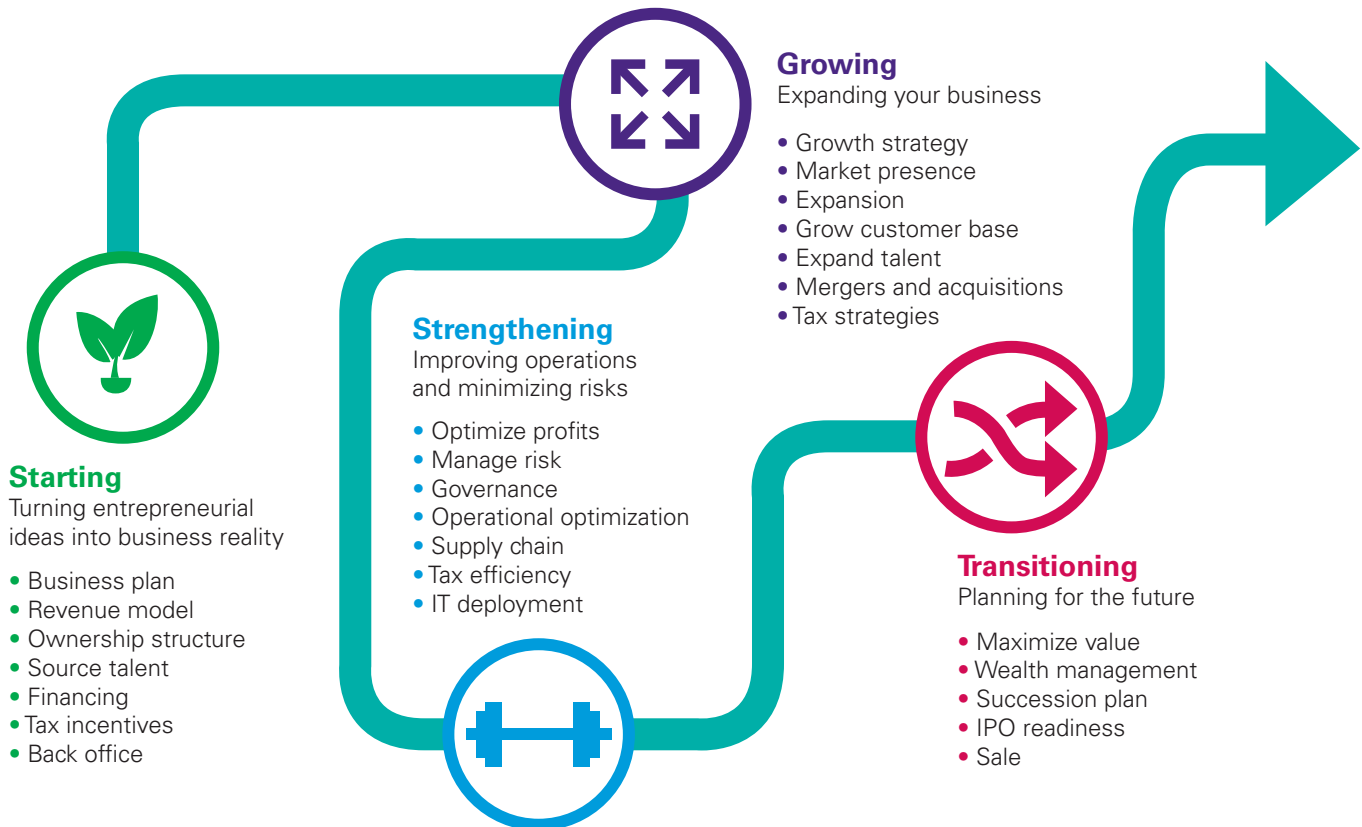


Basic  
package of  
services for  
emerging  
companies



# From seed to speed — we're here to help

All companies have a business cycle — from a startup to a mature company, and each stage presents its own set of opportunities and challenges. KPMG Enterprise advisers understand what it takes for you to be successful at each stage of your business journey.



## KPMG Enterprise innovative startups network

You know KPMG, you might not know KPMG Enterprise. We're dedicated to working with businesses like yours. It's all we do. Whether you're an entrepreneur looking to get started, an innovative, fast growing company, or an established company looking to an exit, we understand what is important to you and can help you navigate your challenges — no matter the size and stage of your business.

The KPMG Enterprise global network for innovative startups has extensive knowledge and experience working with the startup ecosystem. The global

network of professionals understands the complex challenges startups and fast growing companies face and can help you navigate every stage of development. From idea to exit. So you can look forward to that day when your vision becomes reality. Whether you are looking to establish your operations, raise capital, expand abroad, or simply comply with regulatory requirements — we can help. From seed to speed, we're here throughout your journey.

Members of KPMG Enterprise global network for innovative startups are

embedded in to the ecosystem locally. Our clients collaborate with a global network of industry focused KPMG professionals who understand the marketplace challenges faced by startups and fast growing companies. Our passion and mind-set matches the companies we serve: entrepreneurial, hands-on, proactive, visionary, and dedicated. You gain access to KPMG's global resources through a single point of contact a trusted adviser to your company. It's a local touch with a global reach.

# KPMG Enterprise basic package of services for emerging companies



# Contacts

**Brian Hughes**  
**National Leader**  
**KPMG Private Markets Group US**  
**Co-Leader**

KPMG Enterprise Innovative Startups Network  
E: [bfhughes@kpmg.com](mailto:bfhughes@kpmg.com)

**Arik Speier**  
**Head of KPMG's Technology Practice in Israel**  
**Co-leader**

KPMG Enterprise Innovative Startups Network  
E: [aspeier@kpmg.com](mailto:aspeier@kpmg.com)

[kpmg.com/enterprise](http://kpmg.com/enterprise)

[kpmg.com/socialmedia](http://kpmg.com/socialmedia)



[kpmg.com/app](http://kpmg.com/app)



The information in this email is confidential and may be legally privileged. It is intended solely for the addressee. Access to this email by anyone else is unauthorized. If you are not the intended recipient, any disclosure, copying, distribution or any action taken or omitted to be taken in reliance on it, is prohibited and may be unlawful. When addressed to our clients any opinions or advice contained in this email are subject to the terms and conditions expressed in the governing KPMG client engagement contract.

© 2015 KPMG International Cooperative ("KPMG International"), a Swiss entity. Member firms of the KPMG network of independent firms are affiliated with KPMG International. KPMG International provides no client services. No member firm has any authority to obligate or bind KPMG International or any other member firm vis-à-vis third parties, nor does KPMG International have any such authority to obligate or bind any member firm. All rights reserved.

The KPMG name and logo are registered trademarks or trademarks of KPMG International.

Designed by [Evalueserve](http://Evalueserve.com).

Publication name: Basic package of services for emerging companies

Publication number: 132906-G

Publication date: December 2015