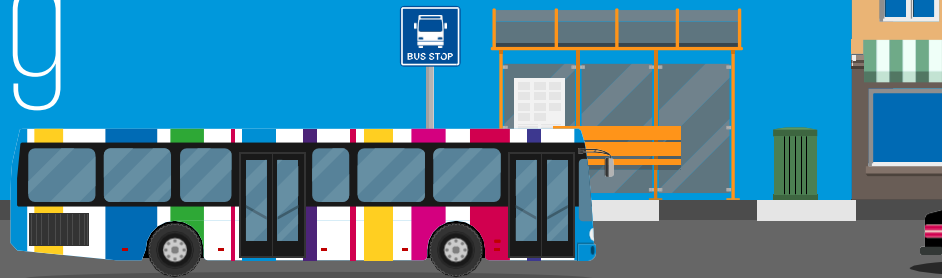


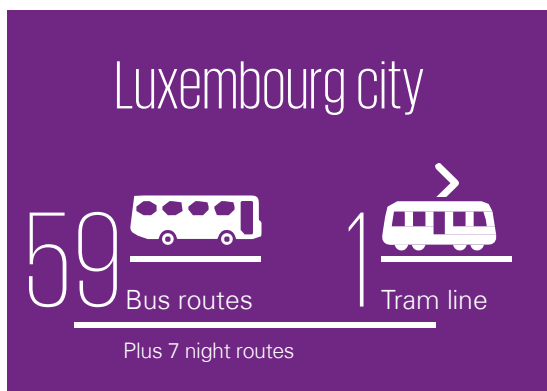
# Getting around Luxembourg



## Transport and infrastructure

Public transport in Luxembourg City is ever-evolving, with a brand-new tramway joining its extensive bus, train, bike and taxi network.

Traveling within the city is convenient and connections with neighboring regions are robust. However, venturing further afield usually requires a car. More than 50% of commuters drive to work, which the government hopes to slash by offering free national public transport since March 2020. While Covid-19 managed to stall this ambition, Luxembourg expects the use of public transports to rise sharply, as the pandemic loses momentum.



Tram Station map: [Here](#)



### Bus

The bus network is divided into three major sub-networks: the AVL operates close to 60 routes within Luxembourg City; the RGTR operates across the country; and the TICE covers nine municipalities in the country's southwest. The number of inter-municipal bus routes is increasing too.

For night owls, seven night-bus routes run on Fridays and weekends until 3:30am.

On 29 October 2021, just a few days before the opening of COP26 in Glasgow, the Government Council adopted the National Long-term Climate Action Strategy. This strategy will serve as a basis for other sectoral strategies and roadmaps aiming at the gradual decarbonization of way of life and the transition to climate neutrality for Luxembourg by 2050 at the latest.



### Tramway

Public transport is a fast, clean and free way of getting about in Luxembourg. Yes, you heard it right — it's free! Since 2020, all public transport modes (i.e. buses, trains and the tram) are free of charge all over Luxembourg's territory. And with a network that constantly adapts to the passengers' needs, this transportation mode is increasingly popular, among residents and visitors alike.



### Cross-border workers

Every day, over 210,000 commuters from Belgium, France and Germany travel to the Grand Duchy. Many cross-border bus routes, rail links and park-and-ride facilities are maintained to accommodate them.



### Biking

Luxembourg City's bike share scheme, *vel'OH!*, boasts over 100 docking stations and nearly 850 bikes. Since 2018, the entire fleet of *vel'OH* bikes is 100% electric.

The country-wide network of cycle paths spans 600km, with plans to expand it to 950km.



### Taxis and rideshares

Taxis are widely available in Luxembourg City, and its electric-car-sharing program *Carloh* is growing. Luxembourg's national carpooling platform, *CoPilote*, now offers the mobile app of Luxembourg's carpool community *Klaxit* to connect drivers and passengers offering drivers fewer detours and passengers more flexibility with their schedules.



### Traffic

Luxembourg City suffers from traffic congestion, especially during rush hour when up to 40 minutes can be added to commute times. The government expects the new tramline and its free public transport initiative to improve this issue.



### Information

The *mobilitet.lu* app offers real-time information on public transport. All tram stops and many bus stops include signs with real-time updates as well.



### Public transport fares

Since 1 March 2020, public transport is free of charge country-wide (CFL, Luxtram, AVL, RGTR and TICE). Luxembourg is the first country in the world to offer free public transport nationally.



### Cross-border transport fares

Cross-border transportation is split into **RegioZone 2** (linking Luxembourg to the Saarland) and **RegioZone 1** (all other cross-border traffic). Since March 2020, costs have been slashed.

A 2-hour ticket **RegioZone** is valid for unlimited journeys for 2 hours after its validation on cross-border **RegioZone** bus lines. It is not valid on international train journeys. Bus users from **RegioZone 1** pay €3, while **RegioZone 2** travel costs €5.

A monthly subscription in zone 1 costs €40, down from €85, while in zone 2, monthly subscriptions cost €85 instead of €135. An annual pass costs €360 in zone 1 instead of €750, and €750 in zone 2 instead of €1,190.

Sources: [Justarrived](#); [CFL](#); [CFL](#); [Mobilitet](#)