



The Sustainable Investment Framework Navigator

KPMG and the University of Cambridge Institute for Sustainability Leadership (CISL) have collaborated to develop the Sustainable Investment Framework Navigator (SIFN), a world-class, leading digital solution that combines academic rigour with industry knowledge and innovative technology.

The tool is based on the Sustainable Investment Framework, developed by the CISL in conjunction with the Investment Leaders Group (ILG), with the goal of measuring the alignment of investment funds with the United Nations Sustainable Development Goals (SDGs).

The SIFN can be used for:

- Gaining insight into the current impact of an investment portfolio, and to track changes in its impact overtime
- Reporting the impact of an investment portfolio to both internal and external stakeholders
- Assessing asset managers according to the impact of their investment portfolio, instead of strictly focusing on the more traditional approach

- Facilitates a broad impact and scale for the framework to be adopted globally
- Is an excellent steering instrument for decision making with outcomes at the investment and portfolio level
- Can be used for comparisons in multiple ways (e.g. benchmarks, investment level and against internal and external peers)

The SIFN offers a solutions because:

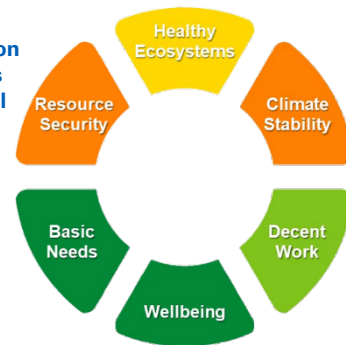
- It gives a starting point for continuous development
- It has a pragmatic approach, which is linked to available environmental and social data relating to the SDGs
- It provides visual outcomes for communication with stakeholders
- The framework is supported by the Investment Leaders Group, which includes 12 large banks, insurance companies and asset managers

The SIFN tool:

- Allows investors to measure their investment portfolio through a simple and transparent software
- Makes data gathering and integration simple through inclusion of a data library

Allows for disclosure based on a range of metrics from basic to ideal

Colors used to indicate relative performance compared to a benchmark



Aligned with the SDGs

Performance indicated per US\$1 million of investments

Lower values preferable for the top half, where as higher values preferable for the bottom half

Contact us

Arjan de Draaijer
Managing Partner,
Sustainability
KPMG in the Netherlands

Anthony Cowell
Partner,
Head of KPMG IMPACT
KPMG in the Cayman Islands

Leonie Jesse
Associate Director,
Sustainability
KPMG in the Netherlands

Arnaud van Dijk
Principal,
KPMG IMPACT
KPMG in the Cayman Islands

E: dedraaijer.arjan@kpmg.nl
T: +31 20 6567943

E: acowell@kpmg.ky
T: +1 345 914 4338

E: jesse.leonie@kpmg.nl
T: +31 6 10919570

E: avandijk1@kpmg.ky
T: +1 345 914 4734

The information contained herein is of a general nature and is not intended to address the circumstances of any particular individual or entity. Although we endeavor to provide accurate and timely information, there can be no guarantee that such information is accurate as of the date it is received or that it will continue to be accurate in the future. No one should act on such information without appropriate professional advice after a thorough examination of the particular situation.

© 2020 KPMG Advisory N.V., a Dutch limited liability company and a member firm of the KPMG global organization of independent member firms affiliated with KPMG International Limited, a private English company limited by guarantee. All rights reserved. The KPMG name and logo are trademarks used under license by the independent member firms of the KPMG global organization.