

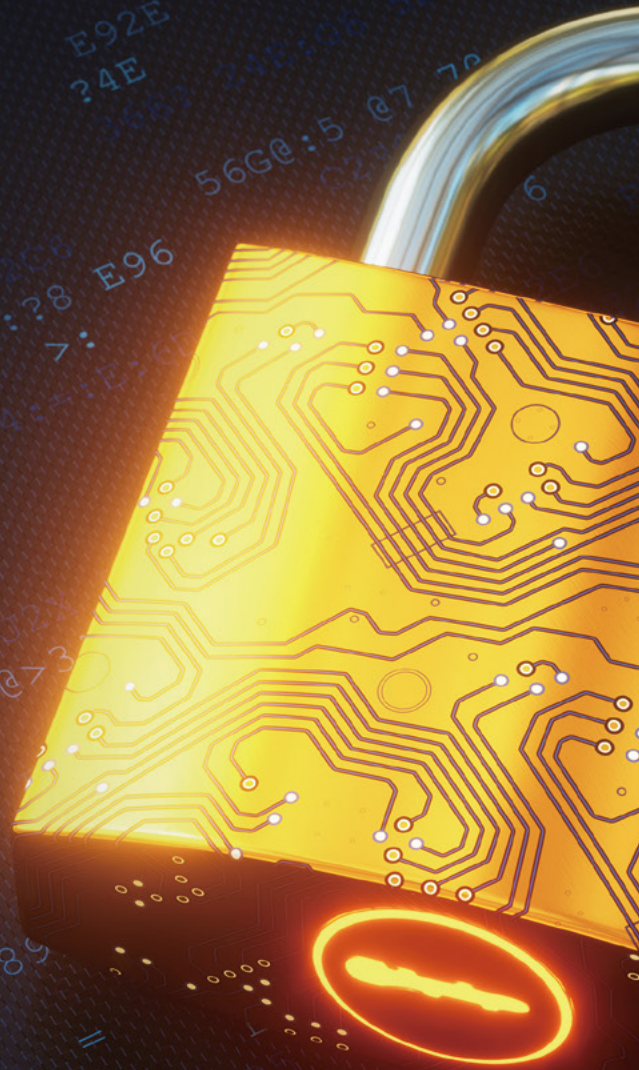


# Data Security Plan and Implement

KPMG Cybersecurity

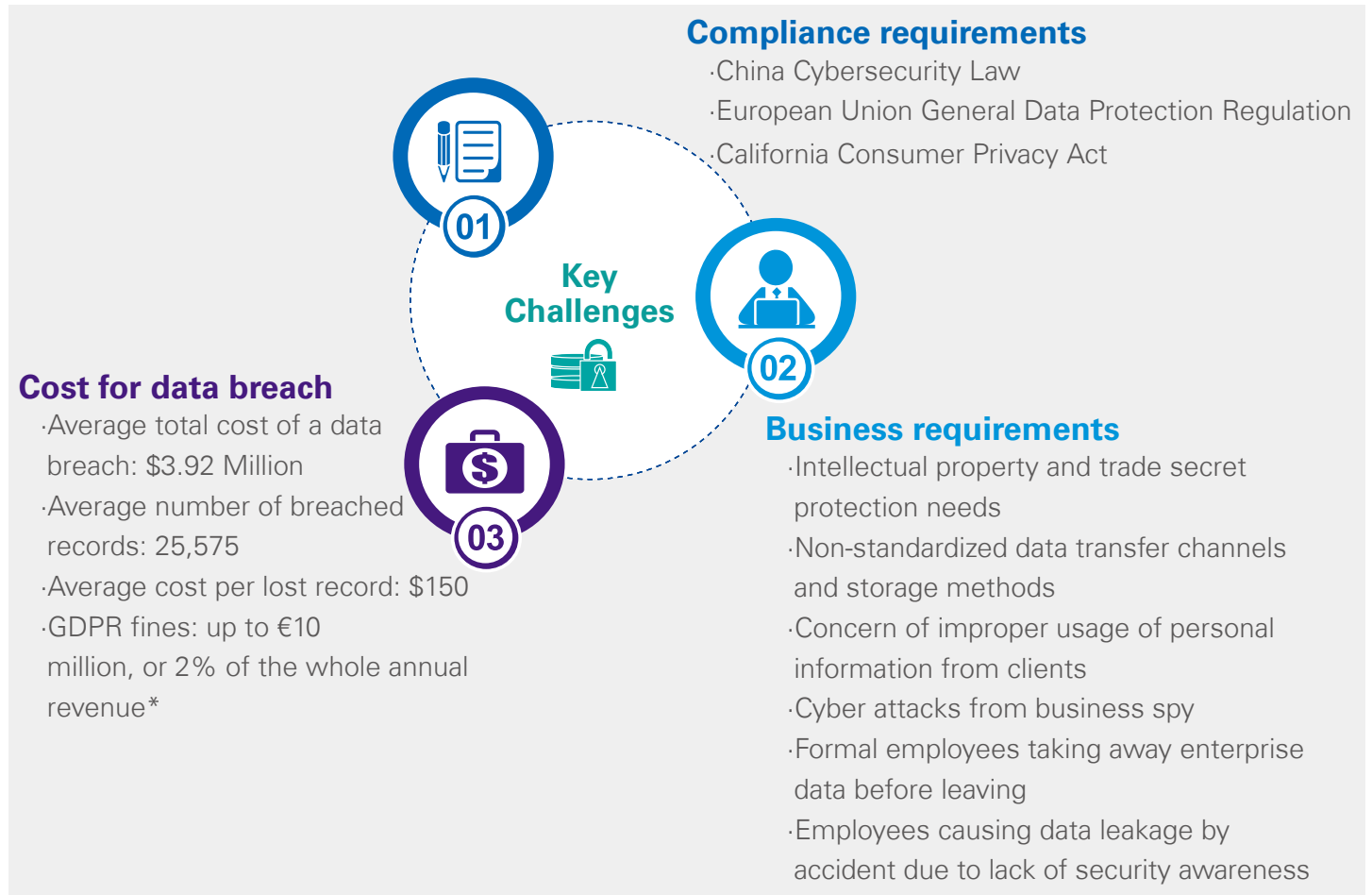
KPMG China

[kpmg.com/cn](http://kpmg.com/cn)



Recent business transformation and technological evolution have created new challenges and difficulties in securing organization's own sensitive data. Data is currently becoming an organization's most important asset and an increasing number of data breach incidents are happening, because of which, organizations are putting more and more emphasis on the protection of intellectual property rights, personal information and other sensitive data.

With the enforcement of relevant laws and regulations for data security and/or personal information protection, data security risk is now becoming one of the top risks which requires to be addressed and remediated appropriately.



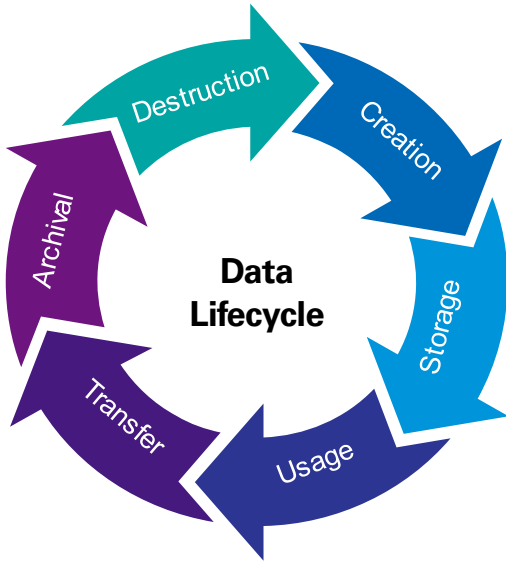
## KPMG Data Security Service

KPMG offers end-to-end Data Security Services that could help you to secure and protect your critical and sensitive data during the full information lifecycle from generation to destruction.

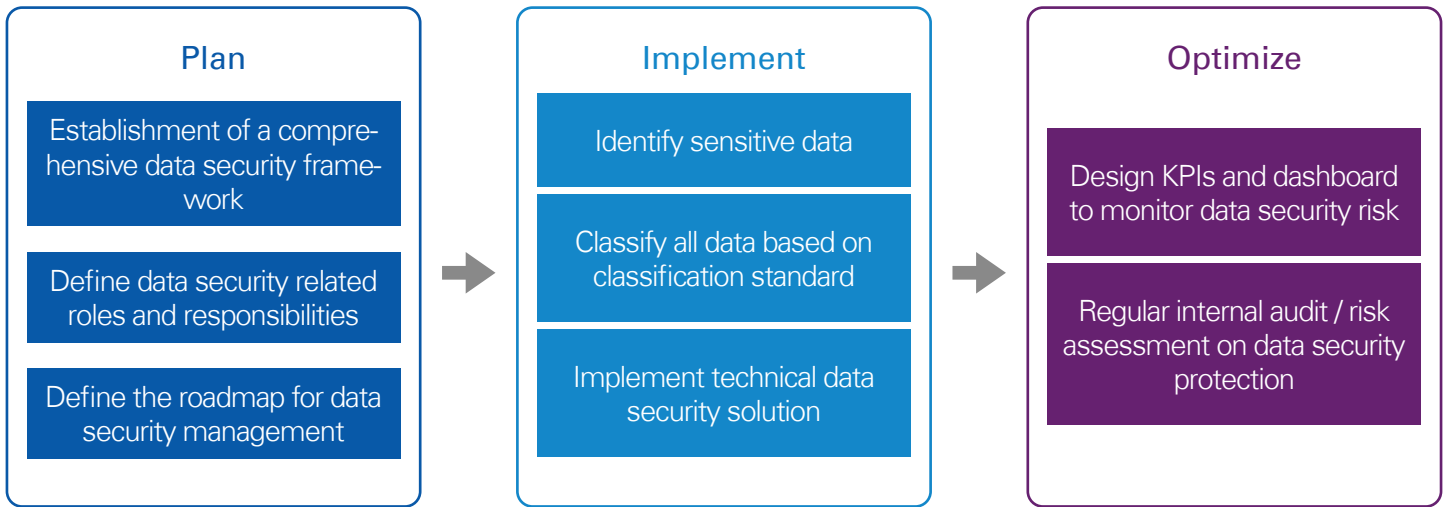


# KPMG Data Security Methodology

Focusing on the whole lifecycle of data protection, KPMG's data security methodology provides in-depth insights of the key security controls and requirements for People, Process and Technology in your organization, and we are able to assist our clients with the establishment, assessment and optimization of data security capabilities.

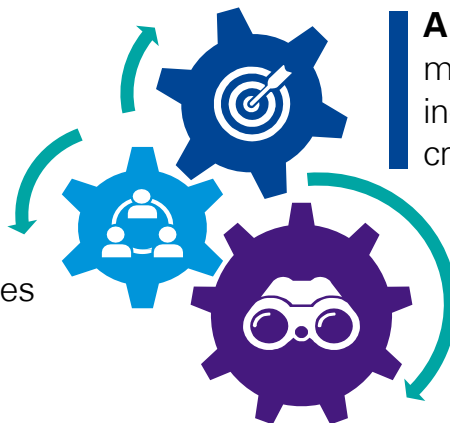


- People**
  - Data security organization and resource allocation
  - Cross-function cooperation and communication (incl. IT, Security, Legal & Compliance, etc.)
  - Data security training, awareness and education
- Process**
  - Data security strategy
  - Data classification standard
  - Information asset management
  - Access control
  - Data Backup and Restore
  - Endpoint Security Management
- Technology**
  - Data loss prevention solution
  - Endpoint protection (incl. anti-virus, USB management, software whitelist, etc.)
  - Encryption
  - Bastion system
  - SIEM platform



## Benefits from Data Security Management

**A specialized team** with rich data security knowledge and experiences



**A distinct approach** that is based on multiple frameworks, regulations and industry best practices, and allows for cross-reference and comparison

**Extensive experiences** in data security services across a wide range of industries

# Contact us

**Henry Shek**

KPMG China  
Cybersecurity  
Partner  
Tel: +852 2143 8799  
henry.shek@kpmg.com

**Richard Zhang**

KPMG China  
Cybersecurity  
Partner  
Tel: +86 (21) 2212 3637  
richard.zhang@kpmg.com

**Quin Huang**

KPMG China  
Cybersecurity  
Director  
Tel: +86 (21) 2212 2355  
quin.huang@kpmg.com

**Danny Hao**

KPMG China  
Cybersecurity  
Director  
Tel: +86 (10) 8508 5498  
danny.hao@kpmg.com

**Brian Cheung**

KPMG China  
Cybersecurity  
Director  
Tel: +852 2847 5062  
brian.cheung@kpmg.com

**Frank Wu**

KPMG China  
Cybersecurity  
Associate Director  
Tel: +86 (21) 2212 3180  
fm.wu@kpmg.com

**Jason Song**

KPMG China  
Cybersecurity  
Associate Director  
Tel: +86 (21) 2212 3306  
jason.song@kpmg.com

**Jason Li**

KPMG China  
Cybersecurity  
Associate Director  
Tel: +86 (10) 8508 5497  
jz.li@kpmg.com

**John Chiu**

KPMG China  
Cybersecurity  
Associate Director  
Tel: +852 2847 5096  
john.chiu@kpmg.com

**Kevin Zhou**

KPMG China  
Cybersecurity  
Associate Director  
Tel: +86 (21) 2212 3149  
kevin.wt.zhou@kpmg.com

**Kevin Fan**

KPMG China  
Cybersecurity  
Associate Director  
Tel: +86 (21) 2212 2200  
kc.fan@kpmg.com

**Olive Wang**

KPMG China  
Cybersecurity  
Associate Director  
Tel: +86 (10) 8553 3630  
oh.wang@kpmg.com

**Andy Yuen**

KPMG China  
Cybersecurity  
Associate Director  
Tel: +852 3927 4697  
andy.yuen@kpmg.com

**William Xu**

KPMG China  
Cybersecurity  
Associate Director  
Tel: +86 (21) 2212 4633  
william.q.xu@kpmg.com

[kpmg.com/cn/socialmedia](https://kpmg.com/cn/socialmedia)



For a list of KPMG China offices, please scan the QR code or visit our website:  
<https://home.kpmg.com/cn/en/home/about/offices.html>

The information contained herein is of a general nature and is not intended to address the circumstances of any particular individual or entity. Although we endeavour to provide accurate and timely information, there can be no guarantee that such information is accurate as of the date it is received or that it will continue to be accurate in the future. No one should act on such information without appropriate professional advice after a thorough examination of the particular situation.

© 2020 KPMG Huazhen LLP, a People's Republic of China partnership and KPMG Advisory (China) Limited, a limited liability company in China, are member firms of the KPMG global organisation of independent member firms affiliated with KPMG International Limited ("KPMG International"), a private English company limited by guarantee. All rights reserved. Printed in China.

The KPMG name and logo are registered trademarks or trademarks of KPMG International.