



# Boardroom Questions

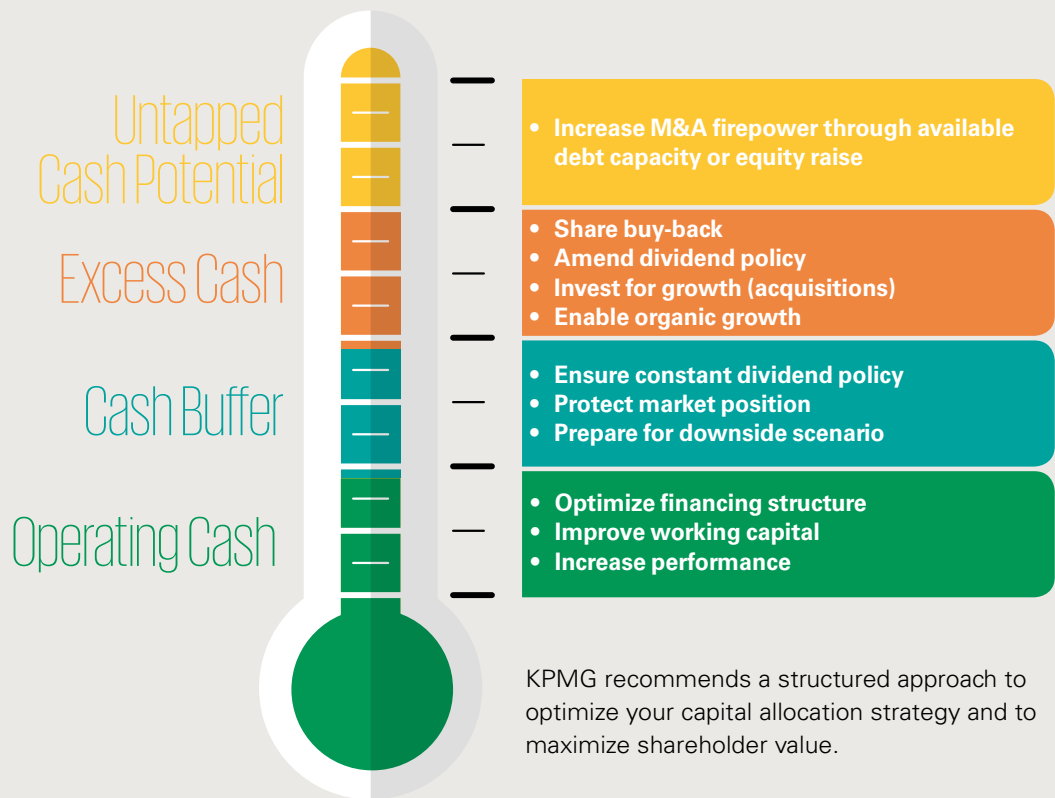
Creating value through optimized capital allocation

An optimal allocation of capital creates real shareholder value – is your company using its capital wisely?

The capital allocation process is a critical component of strategic execution. Long-term competitive advantage requires companies to develop optimal combinations of resources through a strategic capital allocation process.

Thus, effective capital allocation is one of the most essential responsibilities of the board and management in order to create and sustain long-term shareholder value.

## Cash level indicator



## What questions should the Board ask itself?

- How do we measure shareholder value creation?
- How does Management deal with excess cash?
- Do we have the right controls and metrics in place to enable us to oversee management's capital allocation decisions and monitor its performance?
- Are we considering all possible options to allocate capital in an optimized way?
- Do we need to think beyond our traditional approach to allocate our capital?
- Which capital is available for allocation? Which sources of capital do we have? Are there any alternative sources that we have not explored yet?
- Does the cash position significantly exceed the required buffer and what can we do with this capital?
- Could a share buy-back program or an extraordinary dividend increase shareholders' value?

## What should the Board consider doing? Which actions should it take?

Develop a capital allocation strategy which supports company's long-term strategy while considering performance optimization, working capital improvements, R&D and CAPEX investments, organic and inorganic growth, debt financing, capital increase, dividend policy and share buy-back programs.

## Questions the Board should ask his management team?

- Does our company create real shareholder value?
- Do we understand our current share price valuation and how it relates to our internal view on the company's value?
- What is the perception of the company in capital markets?
- Do we have a sound benchmark of relevant historic and forecasted KPI's with our peers and competitors?
- Can we quantify different financial scenarios and investment opportunities?
- Do we have a view on potential value creation through external growth? What are the hurdles we should consider for a potential acquisition in terms of growth and price?
- Can we create transparency for decisions by making our strategy and capital allocation measurable?
- Is management sensitive to potential biases in the capital allocation process?

## How can board members be on top of this issue?

- Analysis of today's situation in relation to company's business plan and strategy.
- Develop a sophisticated and stringent capital allocation framework and communicate it internally and externally.
- Gain transparency regarding sources of funds and allocation of capital.
- Reduce cost of capital through optimized capital structure.
- Understand the cost of capital in organic and acquisitive growth.
- Assess share buy-back programs as a flexible short-term instrument along a stable long-term dividend policy.

---

### Contacts

#### **KPMG AG**

Badenerstrasse 172  
PO Box  
8036 Zurich

**kpmg.ch**

#### **Johannes Post**

Partner  
Valuation / Financial Modelling

+41 58 249 35 92

jpost@kpmg.com

#### **Michael Sterkel**

Senior Manager  
Valuation / Financial Modelling

+41 58 249 79 42

michaelsterkel@kpmg.com

---

The information contained herein is of a general nature and is not intended to address the circumstances of any particular individual or entity. Although we endeavor to provide accurate and timely information, there can be no guarantee that such information is accurate as of the date it is received, or that it will continue to be accurate in the future. No one should act on such information without appropriate professional advice after a thorough examination of the particular situation. The scope of any potential collaboration with audit clients is defined by regulatory requirements governing auditor independence. If you would like to know more about how KPMG AG processes personal data, please read our Privacy Policy, which you can find on our homepage at [www.kpmg.ch](http://www.kpmg.ch).

© 2018 KPMG AG is a subsidiary of KPMG Holding AG, which is a member of the KPMG network of independent firms affiliated with KPMG International Cooperative ("KPMG International"), a Swiss legal entity. All rights reserved.